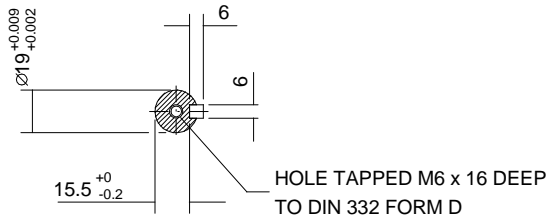


M20 CONDUIT ENTRY

4 HOLES DRILLED
 Ø12 ON A 165 P.C.D.
 EQUI-SPACED AS SHOWN

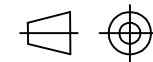
EXTERNAL EARTH POS'N
 ONE ON EACH SIDE OF MOTOR



VIEW ON 'X'

TERMINAL BOX POSITION:- CAN BE ARRANGED AT EITHER 9,12 OR 3 O'CLOCK BY MOVING
 CONDUIT ENTRIES:- TERMINAL BOX CAN BE ROTATED AT 90° INTERVALS
 (CONDUIT ENTRY POSITION SHOWN FOR ILLUSTRATION ONLY).

ALL DIMENSIONS IN MILLIMETRES



FIRST ANGLE
 PROJECTION

**BROOK
 CROMPTON**

Produced by *Tamel s.a.* a company of **NTB**
Technology in Motion

DRG. No. **W20GD0095T**

DRG. REF.

REVISION: | | | DATE | |

SHEET
 SIZE

TITLE
**OUTLINE DIMENSION DRAWING ALUMINIUM TOTALLY ENCLOSED FAN COOLED
 80 FRAME 'D' FLANGE MOUNTED MOTOR**

	NAME	DATE
DRAWN	JM	09-12-10
CHECKED	KC	09-12-10
SCALE	1:2.5	

A3